



KALAHARI OUTFITTERS

DOUGLAS FLETCHER SAFARIS

A true bushveld experience

*Kalahari Outfitters is situated in the North West Province at the border of Botswana and South Africa.
This is a malaria free area with the most beautiful Camel thorn trees and breathtaking sunsets.*





• ABOUT US •

Kalahari Outfitters

This Safari farm was owned by legends, Douglas and Elsa Fletcher, Unfortunately, Douglas passed away on October 2001.

Their youngest son Dougie Fletcher, together with his wife Anjure, wants to follow in his parents' footsteps and give you an unforgettable experience while building a reputation as first-class outfitters.



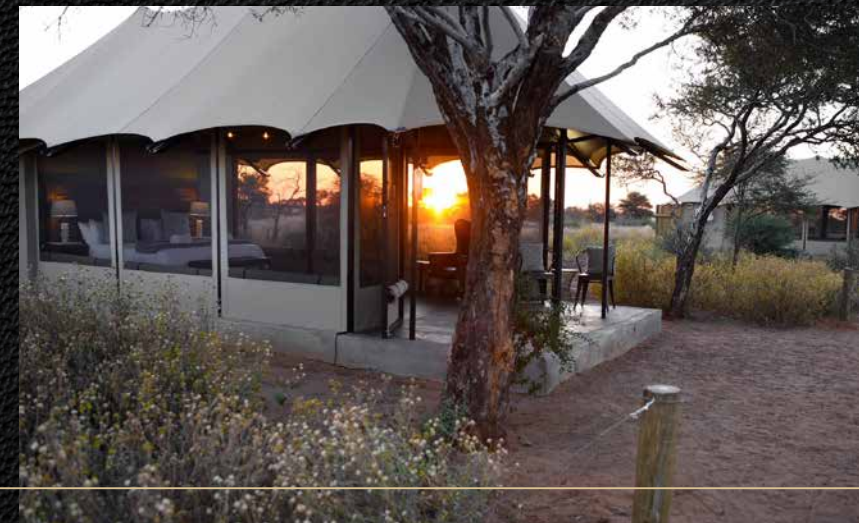
• ACCOMMODATION •

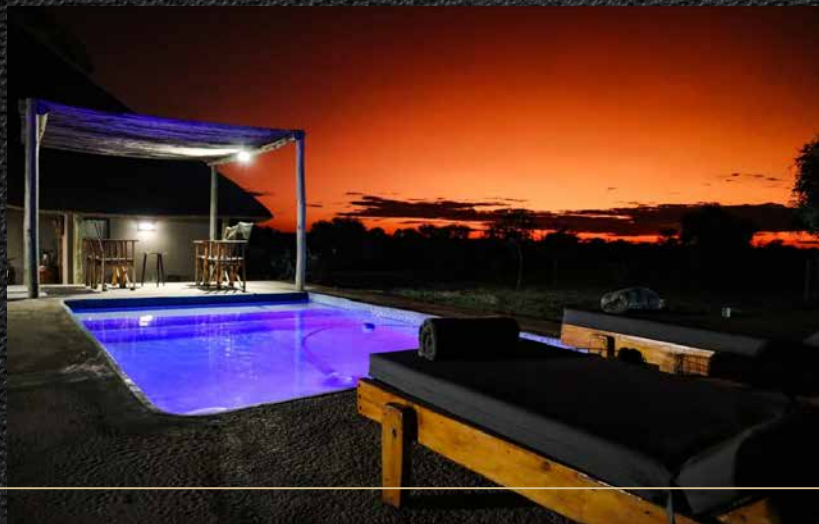
A true bushveld experience

In October of 2019 we decided to upgrade our facilities by building a new lodge to meet the needs of our diverse clientele. This was the birth of Camp Oryx.

There are luxury safari tents with on suited bathrooms and outdoor showers looking out in the nature. Then we have luxury rooms that are open plan with each their own bathrooms. All of our rooms are comfortable with cooling and heating facilities.

Our chef will tickle your tastebuds with some great African dishes, oryx steaks, eland fillets and milktart just to name a few.















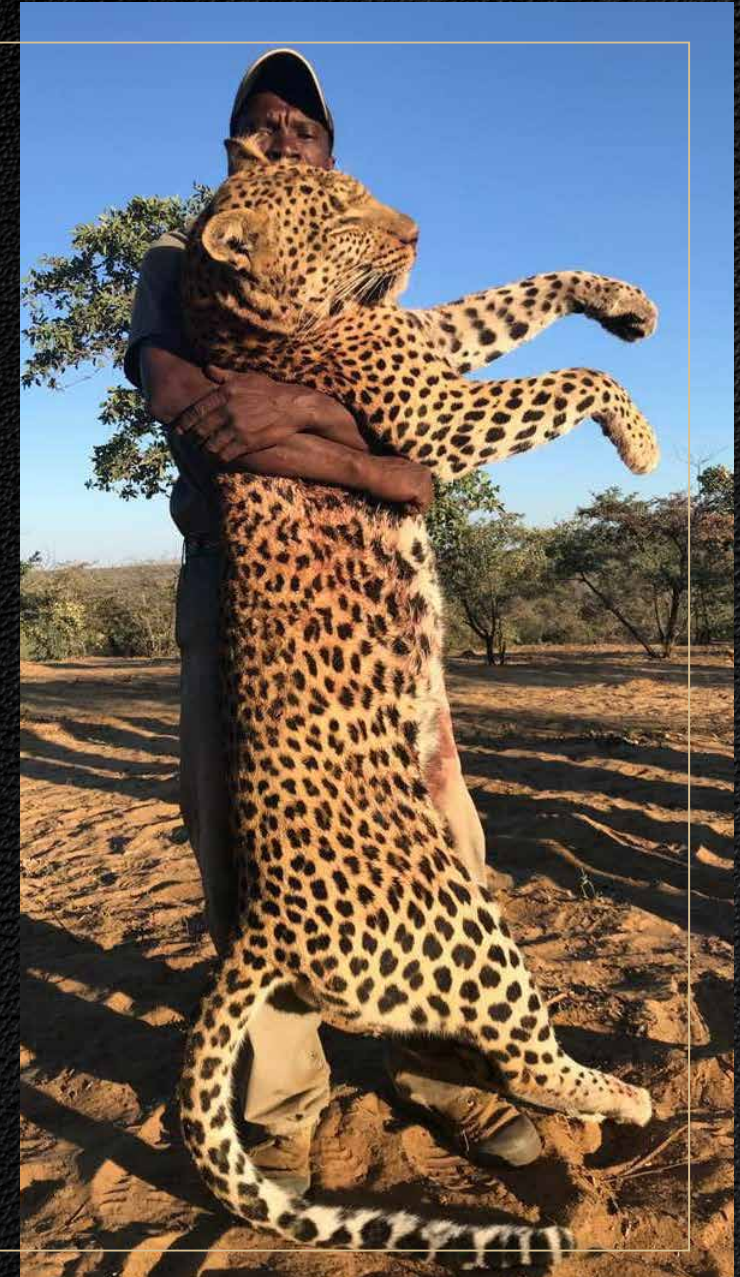


*Donate some of the meat you hunted to the local village school and contribute by bringing school supplies or any donation to help the kids.
Make a Difference*

NAMIBIA / BOESMANLAND

*One of the top areas in Namibia to hunt Elephant or Leopard!!
Best months to hunt these amazing animals are March /
September / October. Avg trophy size on Elephant will be
50-75pds and on Leopard we will focus on getting
you a big old mature Tom.*

PRICE: POR



BOTSWANA | ELEPHANT AND LEOPARD

The home of big tuskers. Elephant paradise and one of Africa's gems to visit. We hunt our leopard in the Southern parts of the Botswana close to our Kalahari base camp. Most of the Elephant are hunted in the Northern parts of the country.

Our leopard area has a Thatchroof lodge and most of the elephant areas accommodation will be in a tented lodge. Accommodation is comfortable.

PRICE: POR

Tiger Fishing can be arranged after your hunt, this way you can experience the amazing Okovongo delta. This must be arranged in advance.



• LADIES •

Come and renew your vows:

Let Anna and her team help you enjoy your special day with our unique African bush wedding.

Wine and cheese:

An afternoon of tasting South Africa's best wine and cheese while watching the sunset

Cocktails:

Enjoy cocktails at the pool while relaxing in the sun.

Spa day:

Spoil yourself with a nice massage with our well-trained masseuse. Prices on request.

Hair and make-up day:

Get our African team to jazz up your trip by doing your hair and make-up. Optional add on we can also do a make-over and get a photographer to capture the experience.

Cooking class on South Africa cuisine:

Learn to make a South African traditional dish and how to prepare game meat the right way.

Day walk:

A morning or afternoon walk with one of our fine trackers educating you about the environment, animal tracks and some of the fine kept bush secrets.

Rhino Walk:

let our Ph take you on a once in a lifetime experience to see these special animals up close.

Note: These activities must be booked in advance.







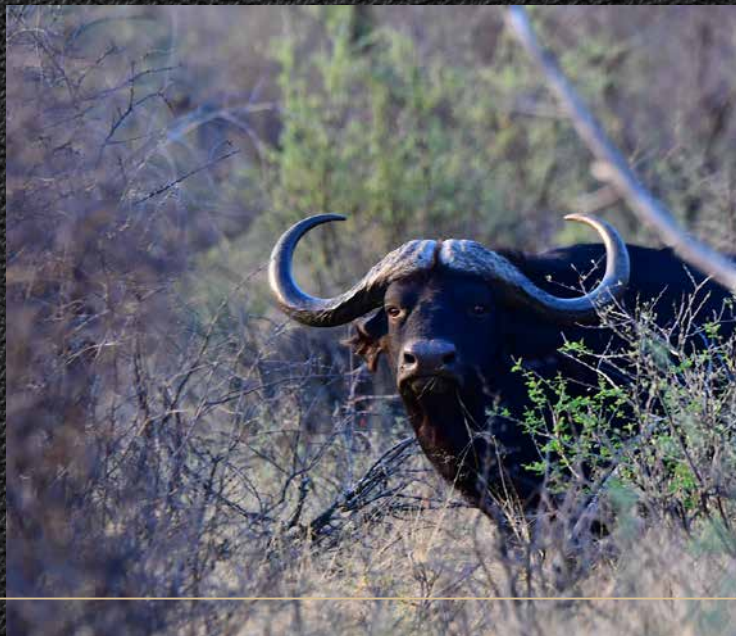
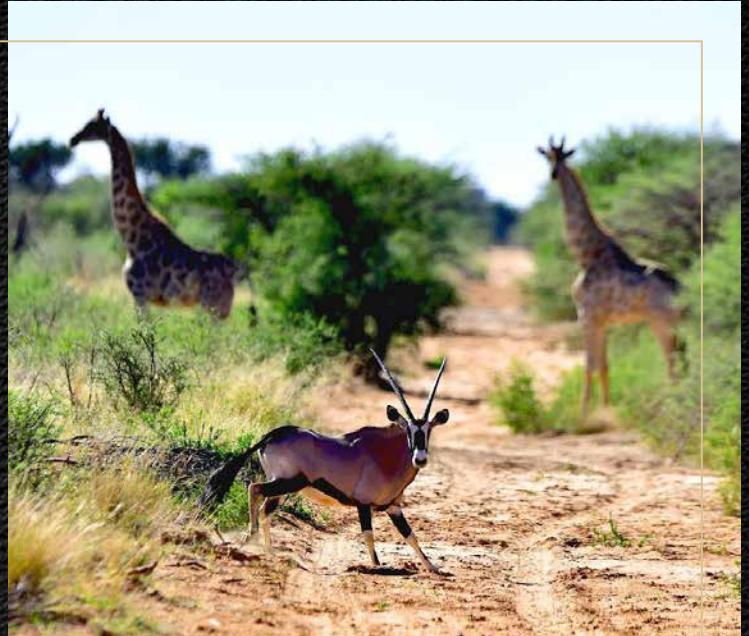
UNDER THE OPEN SKIES

Old school safari at its best

At Kalahari Outfitters we just do something different, we offer an unforgettable evening under the stars after a long day in the bush, we offer you a great experience around the open fire.

You will be spending the night in tents listening to the sounds of Africa. The next morning you will return to the comfortable lodge.





*All prices are in US Dollars.
Our prices exclude tops and cites permit fees.*

<i>Aardwolf</i>	\$2500	<i>Gemsbuck (Oryx)</i>	\$1200	<i>Rhino</i>	POR
<i>African Wild Cat</i>	\$1500	<i>Golden Gemsbuck</i>	\$4000	<i>Rhino (black)</i>	POR
<i>Baboon</i>	Free	<i>Giraffe</i>	\$3800	<i>Roan</i>	\$5500
<i>Black Wildebeest</i>	\$1200	<i>Hippo</i>	POR	<i>Mountain Rheedbuck (Eastern Cape)</i>	POR
<i>Blesbuck (common)</i>	\$590	<i>Impala</i>	\$590	<i>Vaal Rheedbuck (Eastern Cape)</i>	POR
<i>Blesbuck (white)</i>	\$700	<i>Black Impala</i>	\$2500	<i>Common Rheedbuck (Eastern Cape)</i>	POR
<i>Brown Hyena</i>	\$3500	<i>White Flank Impala</i>	\$2500	<i>Sable</i>	\$4000
<i>Blue Wildebeest</i>	\$900	<i>Indian Water Buffalo</i>	\$6500	<i>Springbuck (common)</i>	\$590
<i>Bushbuck (Eastern Cape)</i>	POR	<i>Kudu</i>	\$3000	<i>Springbuck (black)</i>	\$900
<i>Golden Wildebeest</i>	\$4000	<i>Leopard</i>	POR	<i>Springbuck (white)</i>	\$900
<i>King Wildebeest</i>	\$6000	<i>Lion</i>	POR	<i>Springbuck (copper)</i>	\$900
<i>Cape Buffalo</i>	POR	<i>Lioness</i>	POR	<i>Scimitar Oryx</i>	\$3000
<i>Caracal</i>	\$1500	<i>Lion (white)</i>	POR	<i>Steenbuck</i>	\$1000
<i>Crocodile</i>	POR	<i>Nyala</i>	\$2500	<i>Tsessebe</i>	\$2500
<i>Duiker</i>	\$400	<i>Ostrich</i>	\$800	<i>Waterbuck</i>	\$2500
<i>Eland</i>	\$3000	<i>Porcupine</i>	\$800	<i>Warthog</i>	\$400
<i>Elephant</i>	POR	<i>Red Hartbeest</i>	\$1200	<i>Hartmans Mountain Zebra</i>	\$2000
<i>Fallow deer</i>	\$1500	<i>Red Lechwe</i>	\$3000	<i>Burchell Zebra</i>	\$1200
PERMIT FEES				DAILY RATES	
<i>Lion</i>	\$150	<i>Black Wildebeest</i>	\$150	<i>Big Five</i>	\$400
<i>Elephant</i>	\$200	<i>Lechwe</i>	\$50	<i>Hunter</i>	\$350
<i>Rhino</i>	\$200			<i>Observer</i>	\$200

Safari starts on day of arrival and ends on departure

• SAFARI PACKAGES •

PACKAGE 1	PACKAGE 2	PACKAGE 3	PACKAGE 4	PACKAGE 5	PACKAGE 6
<p>Blue Wildebeest Warthog Black Wildebeest</p>	<p>Zebra Blue Wildebeest Warthog Springbuck Steenbuck</p>	<p>Kudu Warthog Impala Blue Wildebeest Duiker Blesbuck</p>	<p>Roan Sable Steenbuck Duiker Warthog</p>	<p>Buffalo Kudu Tsessebe</p>	<p>Lion male Kudu Gemsbuck (Oryx) Duiker Impala Warthog</p>
<p>7 DAYS All inclusive \$3500</p>	<p>7 DAYS All inclusive \$5000</p>	<p>7 DAYS All inclusive \$6900</p>	<p>7 DAYS All inclusive \$10 500</p>	<p>7 DAYS All inclusive \$17 000</p>	<p>10 DAYS All inclusive \$22 000</p>

PRICES INCLUDE

- *Luxurious accommodation at Kalahari Outfitters*
- *All beverages and meals*
- *Special requirements will be catered for*
- *Daily laundry and cleaning service*
- *Service of a Professional hunting guide, tracker, driver and skinner*
- *Preparation of trophies and delivery to local taxidermist*
- *Service of a 4x4 Land Cruiser hunting vehicle*
- *A cooler box on all hunting vehicles*

PRICES EXCLUDE

- *Trophy fees for game wounded or lost*
- *Accommodation expenses prior and after the hunt*
- *Hotel and accommodation prior and after the safari*
- *Charter flight from and to Oliver Tambo to Kalahari Outfitters*
- *Airport taxes and transport cost*
- *Import and permit fees required by other countries*
- *Shipping of trophies and taxidermist bills*
- *Any other sightseeing than at Kalahari Outfitters*
- *Local and International calls and internet*
- *Medical expenses and insurance*
- *15% Vat on daily rates and wounded animals*
- *No vat on exported animals*
- *All DVD and recordings*

Credit card machine is available in camp, 3% on total amount will be added as a credit card charge. Visa and Mastercard only.

TERMS OF SAFARI

- *A deposit of the total hunting costs payable on confirmation of booking.*
- *Full payment of the balance of the hunting costs 10 days prior to the hunt.*
- *Cancellations 3 months prior to hunt will be refunded less 15% administration fee on total deposit.*
- *No refund of a deposit can be made if the client cancels within 3 months of the commencement date of the hunt unless the hunt is rebooked.*
- *All prices on daily rates and on the hunting price list are subject to change.*
- *Payments not made as above should be made in cash, credit card machine or by way of internet transfer before departure from Kalahari Outfitters.*
- *All payments must be done before departure from Kalahari Outfitters.*
- *If the client has the opportunity to hunt an animal included in the package but misses or does not take the chance it will be seen as an opportunity and not be refunded.*



RIFLE

With Kalahari Outfitters you will find a unique blend of dangerous game and plains game all roaming around together. The best all-round rifle would be a trustworthy 375H&H. If you decide to bring two guns, a smaller caliber being a 243. for long-range shooting or something larger being 416. or 470. for elephant and rhino up close. We also give you the option to use one of our rifles we have and expect you only to pay or bring ammunition for the safari.

Temporary Import and Export rifle permit - \$150

BOW HUNTING

Kalahari Outfitters has blinds for bow hunting where you can wait for your best trophy and experience the beauty of the animals and great birdlife. We have blinds and ground blinds, we also try and give you a "walk and stalk" experience if possible. With the large variety of species we offer we recommend that you bring a bow between 50lbs and 90lbs. A professional hunter will assist you with arrow placement and educate you about the different species.

THINGS TO DO

- Photography
- Luxury spa on the site
- Table tennis
- Darts
- Sightseeing on the property
- Relaxing at the swimming pool
- Sleeping under the open skies



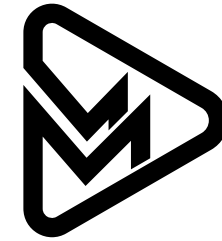
• HALAAL FOOD •

We offer halaal catering on request for clients, but it must be arranged in advance.



• TAXIDERMIST •

African Artistry specializes in Taxidermy and Dip & Pack services to private hunters, as well as hunting outfitters, across South Africa. With more than 15 years of experience in the local hunting and taxidermy field, African Artistry offers a complete and professional service from collection on the hunting ground to the final delivery of your trophy.



Mwitu Media

• FILMING AND •
DVD PRODUCTION

To remember your great safari experience, we have professional cameramen in the area that can help you to take an unforgettable moment with you for a lifetime. Your DVD can show your family the beauty of Africa and also your day-to-day activities. We will refer you to two companies who will edit, compile and send it to you.

Feel free to contact any of our previous hunting friends

Ben Otto

ben@blackbullops.com

James Derby

Texas

+1 (214) 808-0444

Erich Meuller

Austria

+44 660 4170071

Brain Cook

+1 (801) 360-7806

Sam Brennan

Canada

4783161000

Robbert

Hungary

+36 20 572 5693

Craig Kergen

Calgary

+1 403 850 1810

Terry Carver

Canada

+1(403)337 2480

Alex Bingley

England

+44 7901 852226

Stephan Malan

Canada

spmalan@hotmail.com

Rick and Irene Esposito

Canada

403-650-8166

Calaco2@platinum.ca

Nourridene Bencheikh

+212 6 69 09 59 29

Great places to visit while in Africa

We can assist you in arranging trips to these amazing places:



CAPE TOWN



SUN CITY



VICTORIA FALLS



A true bushveld experience

KALAHARI OUTFITTERS

DOUGLAS FLETCHER SAFARIS

GPS Co Ordinates

25°25'55.1"S 23°28'13.6"E

There are some options traveling to Kalahari Outfitters as it is a great distance from Johannesburg. You can either travel by road or fly in with charter to Kalahari Outfitters and land on the property itself. Travel cost is not included in the daily rate or the safari. The airstrip that is situated on Kalahari Outfitters is 1.5km in length and of a high standard.


CONTACT DETAILS

Douglas Fletcher (Owner)

Tel: +27 82 339 3122

Email: douglaf123@gmail.com

Website: www.kalaharioutfitters.co.za

 #KALAHARIOUTFITTERS

 @KALAHARIOUTFITTERS